



**GET
FUTURE
READY**

**A LEVEL
PROSPECTUS
2025/26**

**STEP AHEAD
WITH A LEVELS**

WELCOME

Welcome to A Levels at Wigan & Leigh College

Our A level programme is designed to deliver the best opportunities and ensure you secure your chosen next step. You'll experience the very best academic teaching and learning, build your personal profile and skills through work experience and have the opportunity to enrich your skill set and enjoy your studies through an exciting programme of extra curricula activities.

Your A level programme can be shaped in 3 different ways. If you're set on a specific occupation, choose Career Pathways which includes subjects to get you future ready. If you're not sure on your career, you can mix and match A Levels putting you in control of what you study. And if you prefer coursework to exams, Extended Choices is the way to go.

We're really proud of our students' achievements with more than 400 progressing to some of the UK's leading universities each year.

You'll find all you need to know about subjects, choices and former student successes here, but if there's anything we haven't covered, don't hesitate to get in touch.

We look forward to you joining us in September 2025.

Anna Dawe, Principal



INDEX

4	Uni Ready Former Students	20	English Literature
8	A Level Extras	21	Fine Art
9	Your Support	22	History
10	A Level Life	23	Mathematics
12	Our Campuses	24	Media Studies
13	FAB Futures	25	Physics
14	Biology	26	Politics
15	Business	27	Psychology
16	Chemistry	28	Sociology
17	Computer Science	29	Application Form
18	Economics	31	How to Apply
19	English Language & Literature		

MORE THAN A QUALIFICATION

Choose one of the following routes to get future ready. We deliver A Levels at our Parsons Walk and Leigh Campuses.

MIX AND MATCH

You're in control of your subject choice, great if you're not sure about your future career.

Choose three or four from the following:

• Biology • Business • Chemistry • Computer Science • Economics • English Language & Literature • English Literature • Fine Art* • History • Maths • Media Studies • Physics • Politics • Psychology • Sociology

*A Level Fine Art is at Leigh Campus.

CAREER PATHWAYS

You can take three A Levels focused on a particular career field (four AS Levels in your first year). You'll also study professional qualifications relating to your career, a sector relevant work placement, extra qualifications and masterclasses from industry experts.

A Level Career Pathways are in:

Applied Medical & Health Professional;
Creative Studies;
Economics & Business;
Law & Criminology;
Science, Technology, Engineering & Maths (STEM);
Social Science & Humanities.

EXTENDED CHOICES

If you prefer a combination of assignments and exams, Extended Choices is the best route for you.

Choose two A Levels and a Level 3 BTEC Extended Certificate, equivalent to one A Level to prepare for health and science; business and law; criminology; film & digital media; and computing related careers.

The country's top universities accept this combination of A Levels with a practical, coursework focused qualification. However, if you'd like a career in medicine or veterinary science, you'll need to take the A Level Professional Pathway in Applied Medical and Health.

Extended Choices is at Parsons Walk Campus with the Criminology Extended Choices at both Parsons Walk Campus and Leigh Campus.



**100%
PASS RATE
AND 83%
HIGH GRADES
FOR CLASS
OF 2024**



WHY CHOOSE US?

You'll stand out from other university applicants with the best academic qualifications, plus professional and work-related skills.

Smaller class sizes and one-to-one support.

Extra academic support tutorials individually or in small groups.

Specific support for UKCAT and BMAT qualifications and mock interviews.

Take part in enterprise projects and local and national competitions.

Enrichment opportunities enhance your university applications, while work placements and guest speaker programmes make sure you stand out from the rest.

UNI READY

FORMER STUDENTS

CAIDEN BATE

Former School: Shevington High School

Grades:

B Sociology
B History
B Politics

University:

BA (Hons) Politics - University of Liverpool

"Studying A levels here has been particularly good, as you get lots more one-to-one support as the class sizes are smaller. There's also a focus on making students good members of society."

"I believe politics can change so much and I think it's the best way to achieve real change to affect people's lives."



**FUTURE
POLITICAL
CAMPAIGNER**

EVAN DAVIES

Former School: Fred Longworth High School

Grades:

B Biology
B Chemistry
C Psychology

University:

BSc (Hons) Biochemistry - Edge Hill University

"I'd like to develop drugs for people with learning difficulties. Having ADHD myself, it's a bit of a passion."



**FUTURE
PHARMACOLOGIST**



FUTURE POLITICIAN

JAMIKA BUXTON

Former School: Golborne High School

Grades:
A* Sociology
B History
B Psychology

University:
BA (Hons) Combined Honours in Social Sciences – Durham University

"I did work experience with James Grundy MP which was really good. It gave me a glimpse of what working in politics is like."



BECKY GRADY

Former School: Harper Green School

Grades:
A* Fine Art
A Media
A English Literature

University:
BA (Hons) Fine Art and Illustration
- University of Huddersfield

"I really liked the small classes especially in fine Art. It was good to have time set aside to spend on coursework - we had a lot of freedom too."



FUTURE ARTIST



MORGAN SIXSMITH

Former School: Golborne High School

Grades:

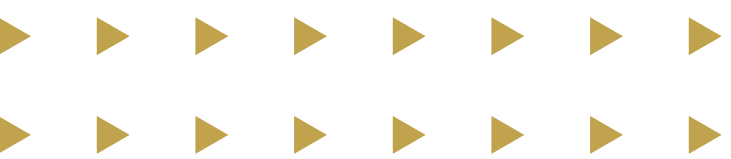
- A* Sociology
- A English Combined
- B Psychology

University:

BSc (Hons) Psychology – Edge Hill University

"I chose to come here after attending an open evening. Speaking to the sociology tutor got me really interested in the course."

FUTURE PSYCHOLOGIST



JESS SHOVELTON

Former School: St Mary's Catholic High School

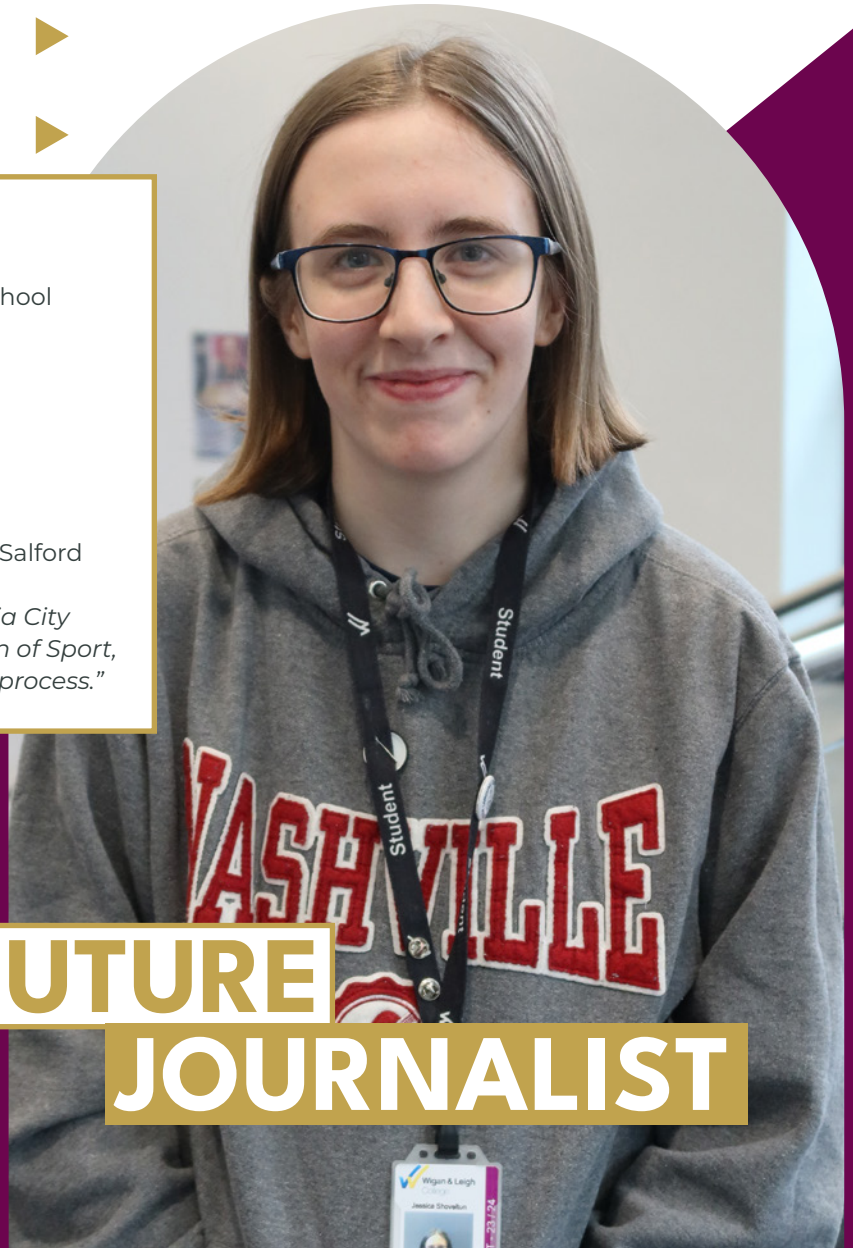
Grades:

- A English Literature
- B Media
- B Sociology

University:

BA (Hons) English and Film – University of Salford

"One of my highlights was the trip to Media City where we saw the recording of A Question of Sport, it was a good insight into the production process."



FUTURE JOURNALIST

ESTHER NDONGALA

Former School: Harper Green School

Grades:

A* Fine Art

A Maths

A Physics

University:

BSc (Hons) Physics with Astrophysics

University of Manchester

"It was great to be able to combine sciences with art. I really enjoyed the Extended Project Qualification - I made a Regency dress inspired by Jane Austin."

**FUTURE
PROFESSOR**

A LEVEL EXTRAS



Studying A Levels with us isn't just about achieving a qualification.

Each week you'll have an Academic Development Day, when you'll study extra qualifications and do placements or voluntary work to develop the skills and attributes that top universities and employers are looking for.

You might want to get involved in:

- career related work placement/internship
- charity fundraising activities
- sailing qualification
- mock interviews for university and higher/degree apprenticeships
- UCAS preparation
- First Aid qualification
- A Level magazine production
- HE+ Programme in partnership with Cambridge University.

EXTENDED PROJECT QUALIFICATION (EPQ)

The EPQ is a self-directed project you'll work on in your second year. It adds value to university applications, as well as UCAS points.

You'll explore a topic outside of your A Level subject curriculum, planning, researching and developing an idea to produce a research-based written report.

Look out for Academic Development Day activities in the following subject area pages.



YOUR SUPPORT

As an A Level student you'll have the best support to help you make the most of your time getting future ready with us.

PERSONAL TUTORS

Your timetable will include regular one-to-one meetings with your Personal Tutor. These meetings are important, as they provide the opportunity for you to work together, helping you both assess your progress and remove any barriers to success.

They will:

- guide you through your course
- create an action plan to help you reach your goals
- track your progress and achievements
- help you access support
- offer advice about overcoming challenges.

HEAD OF STUDIES

There are lots of staff at college to help during your time as a student, including the Head of Studies team who play an important role supporting you to:

- Have fun through enrichment and volunteering activities, but also succeed on your course.
- Monitor and manage attendance.
- Push your grades to above the minimum expected.
- Set, monitor and review targets for improvement.
- Develop resilience.
- Apply for student leadership roles.
- Overcome difficulties.
- Support you with cost of living, wellbeing, housing and health related issues.



LEARNING RESOURCE CENTRES

The Learning Resources Centre (LRC) at Parsons Walk is a modern and spacious environment offering a multifunctional way to study.

There's a fast access PC zone, increased laptop and PC capacity, reading and wellbeing area, with lots of working spaces for group, project and individual study.

Leigh College also has an LRC and a library with access to a wide range of books, magazines, newspapers, subject specific publications, DVDs and CDs.

You can access computers and online resources, including the college intranet, Office applications, e-books, WiFi access and Moodle – the college Virtual Learning Environment (VLE).

Staff are always on hand to help with enquiries and support for you to find the most relevant information relating to your course.

A LEVEL

LIFE



OXBRIDGE FUTURES

Zara and Cassie went to the University of Cambridge for lectures, tours and seminars geared towards university applications and making choices for higher education.

SEEING STARS

A trip to Jodrell Bank Observatory lifted the lid on the design, production and use of radio telescopes.

Students also explored the Lovell Museum and wider grounds, with interactive exhibits, that included a thermal camera, learning more about calculating the mass of the galaxy. They watched a film in the Space Dome planetarium about the link between our human make up and the death of the stars.



Alongside your studies, you'll develop new interests, improve your knowledge base, pick up new skills and boost your self-confidence on trips at home and abroad. Your future ready experiences are not only loads of fun, but great content for university and job applications, as well as the interviews that will follow.



INSIDE POLITICS AT MAYORAL HUSTINGS

Students got an insight into political campaigning at the Greater Manchester College's Mayoral Hustings at Trafford College.

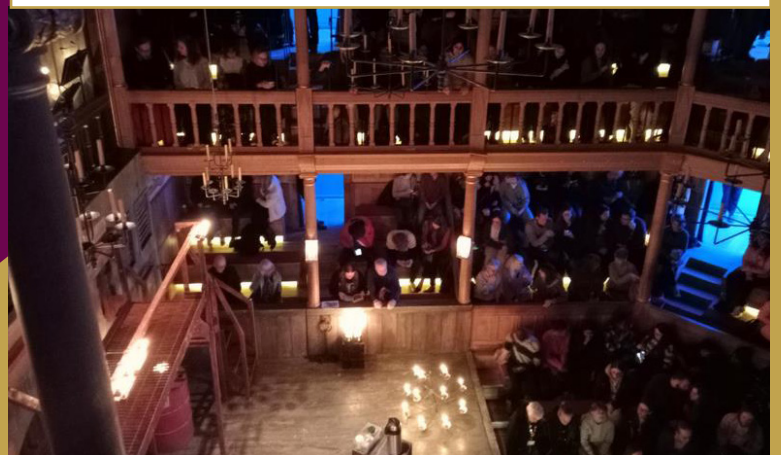
They watched the live panel of Manchester mayoral candidates answer questions as part of their election campaigning. A Level student and student council member, Mika, spoke up too, putting an important question to the panel about tackling homelessness.

SHAKESPEARE OFF THE PAGE

English students visited a production of their set text Othello at the Sam Wanamaker Theatre in London.

Student Jess Shovelton said: *"Seeing how the play was adapted to a more modern context in such a small theatre was amazing. We saw how they manipulated different parts of the play, such as the lighting to tell the story."*

The group also visited Tate Modern at Leicester Square and St. Paul's Cathedral.



Question Time Live

Wigan & Leigh College Centre for Performance
Designed by the head of Studies & Student Council



QUESTION TIME TO FOCUS ON WOMEN

As part of our International Women's Day celebrations, we held a Question Time Event with a Q & A session from the student audience.

Labour MP for Wigan, Lisa Nandy joined Jo Platt, Young Persons Advisor for Wigan Council and many more politicians to form a panel with the college's A Level Head of Quality, Marina Islam-Banford.

HOLOCAUST AMBASSADORS

Students became Holocaust Ambassadors for the North West region on a trip to Poland, when they visited the infamous Auschwitz-Birkenau camps.

The Holocaust Educational Trust's Lessons From Auschwitz project raises awareness of genocide prevention within communities.



WELLBEING THROUGH ACTIVITY

Students got active at Wigan Youth Zone to celebrate the end of their exams, with indoor rock climbing, badminton, basketball and dodgeball.

CAUGHT ON CAMERA

English and Media students took a trip to The University of Salford where they filmed video essays based on JM Coetzee's *Disgrace*. Alongside a tour of the facilities, they took in a lecture and poem analysis on *Love During Apartheid* from author, Keren Poliah.



OUR CAMPUSES



CENTRE FOR ADVANCED TECHNICAL STUDIES

Facilities include a clinical ward, manual handling suite, specialist science laboratories and a health and social care careers hub.

The Centre is also home to our virtual reality space the CAVE, where you can become immersed in a scene, or view 360 degree content with other students using wall or floor projections.

PAGEFIELD CAMPUS

If engineering is included in your A Level route you'll have access to our multimillion pound industry standard facilities, at our Centre for Excellence in Engineering. We've spent £1.8 million on refurbishing the Centre and equipment.



PARSONS WALK CAMPUS

Our main A Level hub is in Wigan town centre. There's a Learning Resource Centre where you can access physical and digital learning aids and much more. Alongside teaching rooms and the refectory there's the New Performing Arts Centre with multimedia suites, a green screen and performance theatre.

LEIGH CAMPUS

You'll enjoy the sixth form experience at the multi-million pound Leigh Sports Village site. You can access new science labs with university standard facilities and equipment. A fully equipped art department is home to A Level Art and our first Digital Academy and Clinical Skills lab are also located here.



FAB Futures

FOCUSED AMBITIOUS BRIGHT

Our team offers impartial advice to help you make decisions about how to get future ready and plan further study options after your course. You can meet us to find out more about:

- How to change course or get an apprenticeship.
- UCAS applications.
- Student Finance applications.
- Applying for higher education at our University Centre.
- Job searches, CVs, letters and job applications.
- Co-ordinating work placements.
- Identifying and building the skills to get ahead.
- Researching and planning to support career ambitions.
- Funding and welfare.
- Support agencies.



CAREER PLANNING

We provide experiences to support you to achieve your dream career.

We hold guest speaker sessions from industry experts, visits to workplaces and opportunities to work on employers' live briefs and projects.

We use up to date labour market information to help you explore careers in your chosen industry, find out more about salary and earnings, growth opportunities and the skills you need to get work ready.

WORK EXPERIENCE

Every A Level student has work experience to get future ready. You'll find out more about your type of work experience during your induction period.

We'll help you find a placement and we make sure your workplace is a safe environment to gain an insight into the world of work.

A work placement can help you decide on the careers or industries you want, or don't want to work in.

It can also help to:

- develop skills for careers
- develop professional behaviour
- discover new talents
- strengthen CVs
- improve industry knowledge
- put learning into practice.

You can book an appointment through the reception team or call:

Parsons Walk Campus 01942 761 681
Pagefield Campus 01942 761 819
Leigh Campus 01942 761 487



COLLEGE BURSARY

You may be eligible for help if you meet certain criteria and you're on a full-time, fully-funded course.

Scan here to find out more

BIOLOGY

Biology is the study of living organisms, covering their structure, function, growth, evolution, and interactions with the environment.

You'll explore the intricate web of life, from microscopic cells to complex ecosystems, to understand the fundamental processes that shape and sustain our planet.

You'll cover the following units: development of practical skills in biology; foundations in biology; exchange and transport; biodiversity; evolution and disease; communication; homeostasis and energy; and genetics, evolution and ecosystems. You'll do ecological fieldwork, and attend talks and workshops on key topics. You'll also be able to join the Medical Society, where you'll investigate broader and deeper topics related to medicine and the life sciences



A LEVEL EXTENDED CHOICES HEALTH RELATED CAREERS

If you attend Parsons Walk you can study a mixed programme of A Levels and a BTEC Level 3 qualification, which is equivalent to one A Level. This is an alternative route to university and degree apprenticeships – great if you prefer a combination of coursework and exams.

You'll need a minimum of 5 GCSE subjects graded 9 - 5 including English and Maths. If you study A Level Mathematics or Science, you'll need a grade 6 at GCSE.

Want to study medicine or veterinary science?
Choose our Career Pathways route.

WHAT UNI COURSES COULD I DO?

- Biochemistry
- Biological Sciences
- Biomedical Sciences
- Biotechnology
- Ecology and Environmental
- Genetics
- Marine Biology
- Medicine
- Microbiology
- Palaeontology
- Physiology

WHAT CAREERS COULD I GET INTO?

- Academic and Industrial Research
- Agriculture and Food Science
- Biotechnology and Pharmaceutical Industries
- Conservation and Environmental Management
- Education and Outreach
- Forensic Science
- Medical and Healthcare Professions

WHAT ARE THE ENTRY REQUIREMENTS?

You'll need a minimum of 5 GCSE subjects graded 9-5 including English and 2 GCSE subjects graded 9-6 including Maths and Combined Science / Biology

A LEVEL EXTRAS

As part of your Academic Development Day you'll connect with working scientists over a text-based chat in the nationwide event, *I'M A SCIENTIST: Get Me Out Of Here!* You'll learn about a range of careers and scientists' different academic journeys. It's an opportunity to meet in a neutral and friendly setting, to ask about research, studying, topics of interest, and current science news.

A LEVELS

(choose two from the following)

- Chemistry
- Mathematics
- Physics

BTEC LEVEL 3 EXTENDED CERTIFICATE IN APPLIED BIOLOGY

You'll learn human anatomy and physiology, from the molecules we depend on, to the function of the human body. Plus you'll get the chance to develop practical skills in microbiology, including the identification of diseases and the selection of appropriate antibiotics. You'll spend time analysing data and research for human health, and study issues surrounding fertility and reproductive technology.

BUSINESS

We'll introduce you to the fundamentals of business.

You'll learn all the aspects of running a business exploring: business objectives and strategic decision making; external influences such as economic, political, legal, technological and social; marketing and marketing strategies; operational strategy; human resources; accounting and financial considerations; globalisation; internationalisation; digital technology; mergers and takeovers; how to manage strategic change; and business ownerships.

WHAT UNI COURSES COULD I DO?

- Accounting
- Business and Marketing
- Business Management
- Events Management
- Finance
- Hospitality and Tourism
- Human Resources and Management
- International Business Management
- Retail and Merchandising

WHAT CAREERS COULD I GET INTO?

- Accountant
- Bank Manager
- Business Analyst
- Business Consultant
- Business Owner (Entrepreneur)
- Business Development Manager
- Cost Analyst
- Estate Agent
- Event Manager and Organiser
- Human Resources Manager
- Investor
- Marketing Executive
- Project Manager
- Recruitment Consultant

WHAT ARE THE ENTRY REQUIREMENTS?

You'll need a minimum of 5 GCSE subjects graded 9-5 including English and Maths.

A LEVEL EXTRAS

As part of your Academic Development Day, you'll hear guest speakers from:

- Bank of England
- Santander
- HSBC
- Fedora Investment Company



A LEVEL EXTENDED CHOICES BUSINESS & LAW RELATED CAREERS

If you attend Parsons Walk, you can study a mixed programme of A Levels and a BTEC Level 3 qualification, equivalent to one A Level. This is an alternative route to university and degree apprenticeships – great if you prefer a combination of coursework and exams.

You'll need a minimum of 5 GCSE subjects graded 9-5 including English and Maths. To study A Level English, you'll need a grade 6 at GCSE.

A LEVELS

(choose two from the following)

- Economics
- English Language & Literature* or English Literature
- History
- Politics

*AS is no longer a stand-alone option.

BTEC LEVEL 3 EXTENDED CERTIFICATE IN BUSINESS

You'll develop skills critical to your success in business. Create and present your own marketing campaign, explore different types of businesses and calculate business finance.



CHEMISTRY

Chemistry is the study of matter, it bridges the gap between the intricate biological processes we observe in living organisms, and the unique behaviour of molecules at the quantum level.

You'll study six modules: practical skills in chemistry; foundations in chemistry; periodic table and energy; core organic chemistry; physical chemistry and transition elements; and organic chemistry and analysis.

You'll get a deeper understanding of the concepts introduced at GCSE level. Plus you'll develop the reasoning skills to explain unfamiliar phenomena. You'll also master a range of practical skills, through a variety of experiments, including the chemical analysis of unknown compounds, building and testing cells, and synthesising the drug aspirin.

WHAT UNI COURSES COULD I DO?

- Chemistry
- Biochemistry
- Chemical Engineering
- Forensic Science
- Pharmacology and Pharmaceutical Science

Chemistry is also a strict requirement for most courses in:

- Medicine
- Veterinary Science
- Dentistry.

WHAT ARE THE ENTRY REQUIREMENTS?

You'll need a minimum of 5 GCSE subjects graded 9-5 including English and 2 GCSE subjects graded 9-6 including Maths and Combined Science / Chemistry.

WHAT CAREERS COULD I GET INTO?

- Synthetic Chemical Industry
- Medicine
- Veterinary
- Dentistry
- Drug Design
- Materials Engineering
- Renewable Energy
- Forensics and Food Science

A LEVEL EXTRAS

As part of your Academic Development Day you'll broaden your understanding of higher education and employment prospects in STEM. We'll support you to enter competitions, such as the Cambridge Chemistry Olympiad, to become familiar with fields of chemistry beyond the A Level curriculum, and enhance your UCAS applications.

COMPUTER SCIENCE

You'll explore the fundamentals of programming, design, problem solving, and using data structures and computer systems in society. You'll analyse the internal architecture of a computer, hardware, software, data representation and encryption techniques.

WHAT UNI COURSES COULD I DO?

- Computer Science
- Information Systems
- Software Engineering
- Artificial Intelligence
- Health Informatics

WHAT CAREERS COULD I GET INTO?

- Data Analyst
- Cyber Security
- Games Developer
- Software Engineer
- Web Developer

WHAT ARE THE ENTRY REQUIREMENTS?

You'll need a minimum of 5 GCSE subjects graded 9-5 including English and 2 GCSE subjects graded 9-6 including Maths.

A LEVEL EXTRAS

As part of your Academic Development Day you could help local businesses develop their online presence and take trips to places like arcades and museums, to find out more about computing outside the classroom environment.

A LEVELS

(choose two from the following)

- Business
- Chemistry
- Mathematics
- Physics

BTEC LEVEL 3 EXTENDED CERTIFICATE IN COMPUTING

You'll learn how a computer works and organises data. Plus an introduction to programming constructs in different languages, learning about object oriented and procedural programming. And you'll explore data security and encryption techniques.

A LEVEL EXTENDED CHOICES COMPUTING & TECHNOLOGY RELATED CAREERS

If you attend Parsons Walk, you can study a mixed programme of A Levels and a BTEC Level 3 qualification, equivalent to one A Level. This is an alternative route to university and degree apprenticeships – great if you prefer a combination of coursework and exams.

You'll need a minimum of 5 GCSE subjects graded 9-5 including English and Maths. To study A Level Mathematics or Science, you'll need a grade 6 at GCSE.



ECONOMICS

Economics helps us to understand how the world works and how to make it a better place.

It's at the heart of understanding some of the major social issues of our time, including climate change, inequality, poverty, health care, an ageing population, obesity, globalisation and the impact of AI.

You'll study human behaviour, choices and decision making in a world with unlimited human wants and needs and limited resources. You'll learn about how markets work and fail, including the dynamics of change at a micro and at a macro levels.

Microeconomics is the study of firms, consumers, and various industries. Macroeconomics is the study of the whole economy – inflation; employment and unemployment; trade and globalisation; income inequality; economic growth versus development; emerging economies such as MIST; fiscal, monetary and supply-side policies. You'll also examine retail and commercial banks.

WHAT UNI COURSES COULD I DO?

- Behavioural Economics
- Economics
- Econometrics
- Economics and Finance
- Economics for Business
- Economics with Politics
- Politics and Philosophy

WHAT CAREERS COULD I GET INTO?

- Accountant
- Business Consultant
- Charity & Development Advisor
- Corporate Lawyer
- Data Engineer
- Financial Bank Manager
- Government Policy Advisor
- Intelligence Analyst
- Marketing and Customer Insight Analyst
- Risk and Investment Analyst
- Stock Market Trader
- Teacher

WHAT ARE THE ENTRY REQUIREMENTS?

You'll need a minimum of 5 GCSE subjects graded 9-5 including English and Maths. 2 GCSE subjects graded 9-6 (one in an essay-based subject).

A LEVEL EXTRAS

As part of your Academic Development Day you'll hear from guest speakers from:

- Bank of England
- Santander
- HSBC
- Fedora Investment Company

ENGLISH LANGUAGE & LITERATURE

If you love reading, writing, or both then A Level English Language & Literature is the subject for you.

You'll feed your passion, challenge yourself, and develop subject expertise, engaging creatively, critically and independently with a wide range of texts such as: *The Great Gatsby* by F. Scott Fitzgerald; *The Handmaid's Tale* by Margaret Atwood; poems by Robert Browning and *A Streetcar Named Desire* by Tennessee Williams.

You'll analyse texts, gaining insights into the nature of different uses of language and ideas about creativity. You'll develop skills as producers and interpreters of language, creating your own texts and critically reflecting on your own processes of production. You'll focus on how writers use language to tell stories of different worlds and perspectives, ideas of conflict between people and societies, and you'll make active connections between texts.

WHAT UNI COURSES COULD I DO?

- Business
- Creative writing
- English
- History
- Journalism
- Languages
- Law
- Literature
- Marketing
- Social Sciences
- Teaching
- Theatre

WHAT CAREERS COULD I GET INTO?

You'll develop the critical, creative and analytical skills for careers in media, advertising, law, retail and leisure as well as others:

- Author
- Copywriter
- Editor
- Freelance Writer
- Journalist
- Lawyer
- Librarian
- Marketing Executive
- Museum Curator
- PR Manager
- Publisher
- Social Media Manager
- Teacher
- Web Editor

WHAT ARE THE ENTRY REQUIREMENTS?

You'll need a minimum of 5 GCSE subjects graded 9-5 including Maths and 2 GCSE subjects graded 9-6, including English or an essay based subject such as History.

A LEVEL EXTRAS

As part of your Academic Development Day you'll benefit from a range of extra qualifications, work placements, voluntary work and masterclasses, delivered by industry experts. You'll visit the theatre, the Bronte Parsonage at Haworth, and libraries for poetry readings, guest talks and workshops from local and national authors. Plus you could become a blog writer and get published right from the start of your course.





ENGLISH LITERATURE



If you love fiction, poetry, or both, then A Level English Literature is the subject for you.

Expect to get to grips with all forms of poetry, plays and prose from the start, with challenging and adult themes including politics, sex and death.

You'll develop your own opinions and be confident in challenging those of others.

At AS Level, we begin with Unseen Prose and Poetry. You'll study a range of extracts from literary prose, exploring early writing to the present day. You'll also study poetry from the AQA Anthology, Love Through the Ages, alongside two amazing gothic novels: Daphne du Maurier's *Rebecca* and Charlotte Bronte's *Jane Eyre*. We finish the first year with Shakespeare's tragedy *Othello*.

In the second year, you'll study two texts of your own choice. We also practise for the Unseen Poetry unit and study two texts about identity: Friel's play *Translations* and Sheers' *Skirrid Hill*. We finish with Atwood's dystopian modern classic, *The Handmaid's Tale*.

WHAT UNI COURSES COULD I DO?

You'll leave with an understanding of essential critical, creative and analytical skills for progression to higher education.

- Business
- Creative writing
- English
- History
- Journalism
- Languages
- Law
- Literature
- Marketing
- Social Sciences
- Teaching
- Theatre

WHAT CAREERS COULD I GET INTO?

- Author
- Copywriter
- Editor
- Freelance Writer
- Journalist
- Lawyer
- Librarian
- Marketing Executive
- Museum Curator
- PR Manager
- Publisher
- Social Media Manager
- Teacher
- Web Editor

WHAT ARE THE ENTRY REQUIREMENTS?

You'll need a minimum of 5 GCSE subjects graded 9-5 including Maths and 2 GCSE subjects graded 9-6, including English, or an essay based subject such as History.

A LEVEL EXTRAS

As part of your Academic Development Day you can take up extra qualifications, work placements, voluntary work and masterclasses. You'll visit the theatre, the Bronte Parsonage at Haworth, and libraries for poetry readings, guest talks and workshops from local and national authors.



FINE ART

You'll develop artistic skills, creativity, critical thinking, and knowledge of the art world, producing your own creative work, while studying that of artists and art movements.

Practical Studio Work: You'll spend time in the studio, exploring various media, techniques, and processes. You'll create artwork in response to a series of projects, developing skills and expressing your ideas visually.

Investigating and Experimenting: You'll research, explore, and experiment with different materials, styles, and approaches. You'll investigate the work of artists and explore new artistic concepts and themes.

Critical and Contextual Studies: Study the work of different artists, art movements and historical and contemporary art contexts. Learn how to analyse and critically evaluate artworks, discussing their influences and significance.

Personal Investigation: In the second year, you'll do a personal investigation with in-depth research and exploration of a chosen topic or theme. You'll produce a body of artwork with a written component that explains your creative process and contextualises your work.

WHAT UNI COURSES COULD I DO?

- Animation
- Architecture
- Art Education
- Art History
- Art Therapy
- Creative Writing
- Fashion Design
- Fine Arts
- Graphic Design
- Interior Design
- Illustration
- Photography
- Web Design

WHAT CAREERS COULD I GET INTO?

- Animator
- Art Critic/Journalist
- Art Conservation /Restoration
- Art Director
- Art Teacher/Art Educator
- Art Therapist
- Curator/Museum Professional
- Fine Artist
- Graphic Designer
- Illustrator

WHAT ARE THE ENTRY REQUIREMENTS?

A minimum of 5 GCSE subjects graded 9-5 including English, Maths and an art based subject and 2 GCSE subjects graded 9-6.

A LEVEL EXTRAS

You'll visit galleries in Manchester, Liverpool and London, as well as Yorkshire Sculpture Park.





HISTORY

Develop your skills of analysis and critical thinking studying British Industrialisation 1783 - 1885 and Weimar and Nazi Germany 1918 - 1945, along with your choice of coursework topic.

You'll evaluate these significant historic periods and develop an understanding of what has gone before to prepare for the future.

Plus you'll develop academically and personally, becoming an analytical, evaluative and a well-rounded learner.

WHAT UNI COURSES COULD I DO?

- Business
- History
- Humanities Subjects
- Journalism
- Law
- Politics

WHAT CAREERS COULD I GET INTO?

- Academia / Education
- Finance
- Journalism
- Law
- Local / National Government
- Publishing
- Research

WHAT ARE THE ENTRY REQUIREMENTS?

You'll need a minimum of 5 GCSE subjects graded 9-5 including English and Maths and 2 GCSE subjects graded 9-6, including an essay based subject such as History.

A LEVEL EXTRAS

You'll hear from an archives guest speaker, visits from the Holocaust Educational Trust Lessons from Auschwitz Project with talks from a holocaust survivor, plus you'll go on UCAS and university trips.

MATHEMATICS

You'll develop a logical approach to problem solving, as well as mathematical knowledge and skills, studying three areas: Pure Mathematics, Statistics and Mechanics.

Alongside developing your understanding of mathematics and its processes, you'll develop your confidence and enjoyment plus a strong foundation for your further study. You'll learn how to apply mathematics in other fields of study and be aware of its relevance in the world of work and society.



WHAT UNI COURSES COULD I DO?

- Accountancy
- Computer Science
- Economics
- Engineering
- Mathematics
- Statistics

WHAT CAREERS COULD I GET INTO?

- Astronomer
- Accountant
- Data Analyst
- Financial Analyst
- Investment Analyst
- Research Scientist
- Statistician
- Teacher

WHAT ARE THE ENTRY REQUIREMENTS?

A minimum of 5 GCSE subjects graded 9-5 including English and 2 GCSE subjects graded 9-6, including Maths

A LEVEL EXTRAS

As part of your Academic Development Day you'll take masterclasses with industry experts, such as Ford France and BAE Systems. You can test yourself at UKMT Senior Mathematics Challenge.

Plus you can benefit from the University of Manchester support sessions and the college's Mathematics lunchtime club.

A LEVEL EXTENDED CHOICES COMPUTING & TECHNOLOGY RELATED

If you attend Parsons Walk, you can study a mixed programme of A Levels and a BTEC Level 3 qualification, equivalent to one A Level. This is an alternative route to university and degree apprenticeships – great if you prefer a combination of coursework and exams.

You'll need a minimum of 5 GCSE subjects graded 9-5 including English and Maths. To study A Level Mathematics or Science you'll need a grade 6 at GCSE.

A LEVELS

(choose two from the following)

- Business
- Chemistry
- Mathematics
- Physics

BTEC LEVEL 3 EXTENDED CERTIFICATE IN COMPUTING

You'll learn how a computer works and organises data, with an introduction to programming constructs in different languages, and object oriented and procedural programming. Explore data security and encryption techniques.

MEDIA STUDIES

We'll encourage you to engage critically with a broad range of historical and contemporary media. If you're an avid TV, magazine and news consumer and want to analyse their effects on society and culture, this is the subject for you.

WHAT UNI COURSES COULD I DO?

- Cinematics & Photography
- Design
- Film Studies
- Journalism
- Marketing
- Media Studies
- Production Management
- Sociology
- TV Studies

WHAT CAREERS COULD I GET INTO?

- Audio-Visual Production
- Journalism
- Marketing Profession
- Media Producing & Directing
- Photography
- Public Relations

WHAT ARE THE ENTRY REQUIREMENTS?

You'll need a minimum of 5 GCSE subjects graded 9-5 including English and Maths and 2 GCSE subjects graded 9-6.

A LEVEL EXTRAS

You can take part in live studio recordings (including Question of Sport), plus Q&A sessions with writers and directors.

A LEVEL EXTENDED CHOICES MEDIA & DIGITAL RELATED CAREERS

If you attend Parsons Walk, you can study a mixed programme of A Levels and a BTEC Level 3 qualification, equivalent to one A Level. This is an alternative route to university and degree apprenticeships – great if you prefer a combination of coursework and exams.

You'll need a minimum of 5 GCSE subjects graded 9-5 including English and Maths. To study A Level English, you'll need a grade 6 at GCSE.

A LEVELS

(choose two from the following)

- Business
- English Language and Literature* OR English Literature
- Media Studies
- Sociology

*AS is no longer a stand-alone option.

BTEC LEVEL 3 EXTENDED CERTIFICATE IN DIGITAL FILM & VIDEO PRODUCTION

You'll develop skills in technical roles such as single and multi camera productions, sound recording and editing. We'll prepare you for creative media roles such as postproduction runner, broadcast assistant, assistant to camera crew and many more.



PHYSICS

You'll learn about the overarching theories of quantum physics, gravitational and electromagnetic fields, and nuclear forces. These physical phenomena affect everything, including us.

In year two, there's an emphasis on astrophysics and cosmology, and medical imaging, as examples of real-world physics in action. We assess you on a range of scientific and mathematical skills, as well as developing your practical abilities.

You'll understand and be able to explain how natural processes occur, such as how the sun radiates, how astronauts appear weightless in space and more.

WHAT UNI COURSES COULD I DO?

- Accountancy
- Aerospace Engineering
- Geology
- Law
- Materials Science
- Medical Biophysics
- Radiography
- Software Engineering
- Medicine
- Natural Sciences
- Particle Physics
- Physics with Astrophysics
- Physics with Medical Physics
- Pure Physics

WHAT CAREERS COULD I GET INTO?

Most engineering careers require Physics, such as Aerospace, Mechanical and Civil Engineering. You may also need physics for careers in medicine. Other careers include:

- Data Scientist
- Environmental Careers
- Geophysicist
- Law
- Medical Physicist
- Radiologist
- Medicine
- Optometry
- Pharmacology
- Nuclear Physicist
- Research Physicist
- Teaching
- Academia

WHAT ARE THE ENTRY REQUIREMENTS?

You'll need a minimum of 5 GCSE subjects graded 9-5 including English and 2 GCSE subjects graded 9-6 including Maths and Combined Science / Physics.

A LEVEL EXTRAS

We'll support you if you want to enter the British Physics Olympiad competition, to challenge yourself and channel your enthusiasm for the subject.



POLITICS

You'll learn about the political systems of the UK and the USA through comparison and debate and will fully understand how we're governed and what we can do to influence the process. This will develop your understanding of society.



WHAT UNI COURSES COULD I DO?

- Politics
- Politics, Philosophy and Economics (PPE)
- Law
- Journalism
- History
- International Relations
- Finance

WHAT ARE THE ENTRY REQUIREMENTS?

A minimum of 5 GCSE subjects graded 9-5 including English and Maths. 2 GCSE subjects graded 9-6 (one in an essay-based subject).

WHAT CAREERS COULD I GET INTO?

- Academia / Education
- Finance
- Journalism
- Law
- Local / National Government
- Publishing
- Research

A LEVEL EXTRAS

You'll visit the Houses of Parliament, where you'll meet MPs in and around the different chambers at Westminster Palace.

PSYCHOLOGY

The scientific study of the mind and behaviour. You'll gain an understanding of how psychologists conduct research, before examining a wide range of areas within psychology.

You'll seek to answer questions such as, why do people obey authority? How do children learn aggressive behaviours? How reliable are eyewitness's memories? In the second year, we take a deep dive into mental health, studying the causes of mental health disorders and various ways in which they're treated.

Forensic psychology examines the causes of criminal behaviour. You'll learn more about how we can reduce this, and what affect prison has on people. We'll also cover Sports Psychology including, how we perform in front of an audience or as part of a team, and how we can effectively manage anxiety.

WHAT UNI COURSES COULD I DO?

- Child Psychology
- Forensic Science
- Linguistics
- Neuroscience
- Primary Teaching
- Psychology
- Sociology
- Social Work
- Speech and Language Therapy
- Youth Work

WHAT CAREERS COULD I GET INTO?

- Human Resources
- Social Work
- Teaching
- Medicine
- Nursing
- Psychology
- Radiography
- Veterinary Surgeon

WHAT ARE THE ENTRY REQUIREMENTS?

You'll need a minimum of 5 GCSE subjects graded 9-5 including English and 2 GCSE subjects graded 9-6 including Maths or Science.

A LEVEL EXTRAS

As part of your Academic Development Day you'll go on trips to a moot courtroom, participate in a mock trial, and hear from academics and those who work with domestic abuse survivors at guest talks in college.



SOCIOLOGY

The study of social life, human behaviour patterns and interactions provides us with a better understanding and reasoning for societal differences.

Families and households: You'll learn about the relationship of the family, as well as the changing roles of men, women and children in modern society. You'll also examine global changes.

Education: You'll study the role of the education system; academic achievement based on class; gender and ethnicity; relationships between students and teachers; labelling and the hidden curriculum.

Crime and deviance: You'll explore explanations of crime, deviance, social order and social control. Examine globalisation and crime, as well as the different impacts of age, gender, class and ethnicity.

Beliefs: You'll investigate ideology, science, NRMS and NAM as well as relationships of different social groups.

Research methods: You'll examine a wide range of research methods and carry out practical research.



A LEVEL EXTENDED CHOICES - CRIMINOLOGY

If you attend Parsons Walk, you can study a mixed programme of A Levels and a BTEC Level 3 qualification, equivalent to one A Level.

This is an alternative route to university and degree apprenticeships – great if you prefer a combination of coursework and exams.

You'll need a minimum of 5 GCSE subjects graded 9-5 including English and Maths. To study A Level English, you'll need a grade 6 at GCSE.

WHAT UNI COURSES COULD I DO?

- Criminology
- Education
- Health
- Policy
- Sociology

WHAT CAREERS COULD I GET INTO?

- Nurse
- Paramedic
- Police
- Solicitor
- Teacher

WHAT ARE THE ENTRY REQUIREMENTS?

You'll need a minimum of 5 GCSE subjects graded 9-5 including English and Maths and 2 GCSE subjects graded 9-6 (one in an essay-based subject).

A LEVEL EXTRAS

As part of your Academic Development Day you'll go on trips, including a moot courtroom where you'll take part in a mock trial, and hear guest talks from academics and those who work in Law and Sociology.

A LEVELS

(choose two from the following)

- English Language and Literature* OR English Literature
- History or Media
- Politics or Business
- Sociology or Economics

BTEC LEVEL 3 EXTENDED CERTIFICATE IN CRIMINOLOGY

Criminology includes aspects of law, psychology, and sociology. You'll examine theories on different types of crime and what makes some people more criminal than others. You'll discover why certain crimes are under-reported and create a campaign for change that increases awareness.

Year 2 will focus on crime and punishment, exploring the purpose of the criminal justice system including how and why we punish crimes. You'll learn about procedures, from the crime scene to the courtroom, and gain an understanding of how the criminal justice system works. You'll review a criminal case to assess whether it's been tried fairly.

APPLICATION



FORM

For applicants under the age of 19 on 31 August 2025

This application form is only to be completed if you are not already a student at the college and you wish to apply for A Levels starting in September 2025.

SECTION 1 - Tell us about yourself		
Birth Sex Male <input type="checkbox"/> Female <input type="checkbox"/>	Pronouns	
Last Name	Ref (office use)	
First Names		
Home Address	Date of Birth	Age on 31/08/25
	Mobile	
Postcode	Telephone	
	Email	
PRESENT OR LAST SCHOOL OR COLLEGE ATTENDED		
Have you ever studied at Wigan & Leigh College before? Yes <input type="checkbox"/> No <input type="checkbox"/>		
Have you been a permanent resident in the UK during the last 3 years? Yes <input type="checkbox"/> No <input type="checkbox"/>		

SECTION 2 - Tell us which course you would like to study at Wigan & Leigh College	
A Levels (a Pathway or specific A Levels)	A Level Extended Choices
Where would you like to study? Wigan <input type="checkbox"/> Leigh <input type="checkbox"/>	
If you are unsure about which course or subject you wish to study, please contact our Admissions Team on 01942 761 111.	

SECTION 3 - Tell us about your qualifications			
Subject (Example: Art)	Qualification (Example: GCSE)	Estimated grade (Example: Grade 6)	Estimated grade (Example: Grade 6)

SECTION 4 - Tell us about any additional support you may need
Do you have: · A disability (eg visual impairment, hard of hearing, mental health difficulties, epilepsy) · A learning difficulty (eg dyslexia, dyscalculia) · A major health condition that may affect your course If so, please tick this box <input type="checkbox"/> We will contact you to discuss your support requirements.
Do you have an Education Health Care Plan (EHCP)? Yes <input type="checkbox"/> No <input type="checkbox"/> If yes, which local authority is your EHCP from (eg Wigan, Bolton)

SECTION 5 - Declaration	
The information you provide in this application form will be used to process your application to college and communicate with you for admission to Wigan & Leigh College. Under the General Data Protection Regulations, we will store this information for a period of 12 months after the start date of the course for which you are applying, after which it will be destroyed securely. We will only share this information with your current school and Wigan Council for monitoring and tracking purposes. The information will not be shared with any other third party unless required to do so for legal reasons. By signing this form, you agree to the above.	
Applicant signature <input type="text"/>	Date <input type="text"/>
If you would like to receive information about the college, future events and courses please tick the appropriate box for how you would like us to keep you informed: phone / text <input type="checkbox"/> email <input type="checkbox"/> post <input type="checkbox"/>	

Supporting Statement

What are your career aspirations?

What have you done to support your application (eg voluntary work, sports achievements, work experience)?

If you need assistance with completing your application form
please contact our Admissions Team on **01942 761 111**.

FOLD HERE

FOLD HERE

Business Reply
Licence Number
RTL B-ZERR-TGRE



College Admissions
Wigan & Leigh College
PO Box 53
Parson's walk
WIGAN
WN1 1RS

HOW TO APPLY

1. COMPLETE AN APPLICATION FORM

Tear out and complete the application form opposite and return it FREEPOST, drop it into one of our college receptions, or apply online today at wigan-leigh.ac.uk/apply

2. THE INTERVIEW

Once we receive your application form, we'll send you an appointment for your admissions interview. At your interview, we'll discuss whether the course you've chosen is right for you and your future career aspirations.

3. THE OFFER

At the end of your interview, if we decide this is the right programme for you, we'll offer you a place at college. Your offer will be conditional on you achieving certain grades in your GCSEs and successfully completing your entrance exam.

4. NEW STUDENT DAY

We'll invite you to a new student day in July where you'll sample your programme, meet your tutors and fellow students to prepare for the start of the term.

5. ENROLMENT

In August, once you have received your GCSE results, we'll invite you into college to complete your enrolment.

6. THE EXPERIENCE

In September you'll start the A Level Programme.

OPEN

EVENTS

**AT THE COLLEGE FOR
TECHNICAL EXCELLENCE**

PARSONS WALK CAMPUS
(WN1 1RR)

4.30pm - 7.00pm

Monday 7 October 2024
Monday 4 November 2024
Monday 27 January 2025
Monday 28 April 2025

LEIGH CAMPUS
(WN7 4JY)

4.30pm - 7.00pm

Monday 14 October 2024
Monday 11 November 2024
Monday 3 February 2025

01942 761 111
wigan-leigh.ac.uk



wiganleighcollege



wiganleighcollege



wiganleighcol



wiganandleighcollege